

Refcomp SRC M 340 LB

Specifications

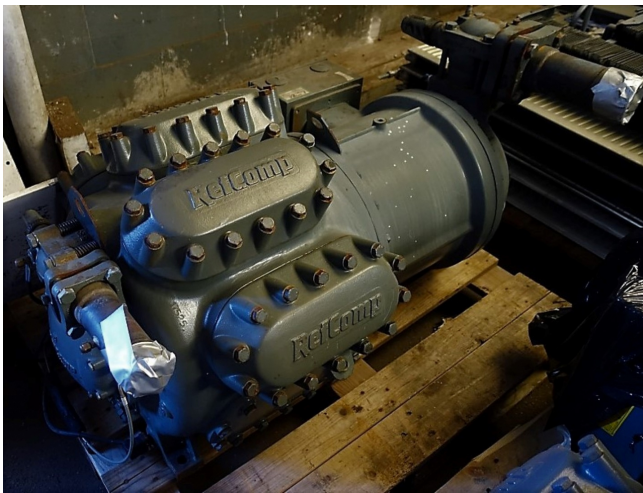
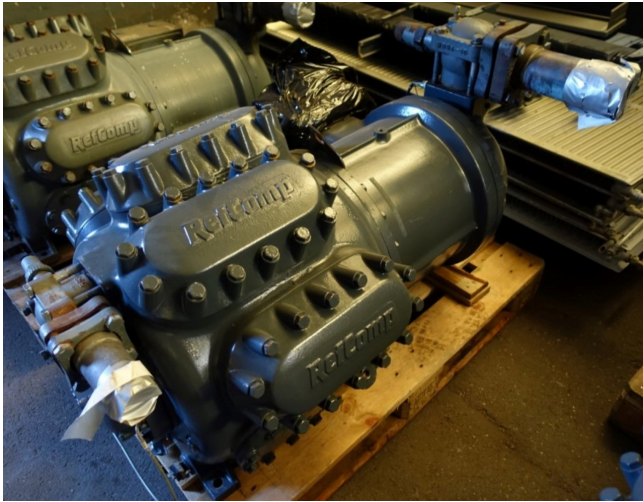
Brand	Refcomp
Type	SRC M 340 LB
Refrigerant	Freon
Refrigerant type	R407 C or other types
kW at +10°C/+40°C	371.0
kW at 0°C/+40°C	240.2
kW at -5°C/+40°C	187.9
kW at -10°C/+40°C	144.5
kW at -20°C/+40°C	109.4
Sight Glass	✓
Weight in kg.	805
Sizes	1200x750x660mm (LxWxH)



Description

Used Refcomp SRC M 340 LB

RefComp SRC M 340 LB // This RefComp uses refrigerant R 407 C / kW 135 / 406.4 Vol m³/h / N° of cylinders 7



RefComp Refrigerant Compressor		MODEL SRC M 340 - L B	Made in Italy
		SER. N. 02-1-17525	R. - 22
VOLT / PH / Hz	380 / 415 - 3 - 50		TEST PRESS. HI : 32,5 bar
F.L.A.	A	205	DWP HI : 25 bar
L.R.A.	P.W.S.	A 719 / 785	DWP Lo: 16 bar
L.R.A.	D.O.L.	A 933 / 1019	DISPLACEMENT AT 50 Hz
OIL Lt.	20. MOTOR THERMALLY PROTECTED BY THERMISTOR - TYPE INT 69 TM		406,4 m ³ /h

